



KONICA MINOLTA

The essentials of imaging



**EXPECT
IMPACT**

bizhub C25

The compact colour multifunctional device

Office system bizhub C25

bizhub C25, office system



The colour all-in-one for **everyday use**

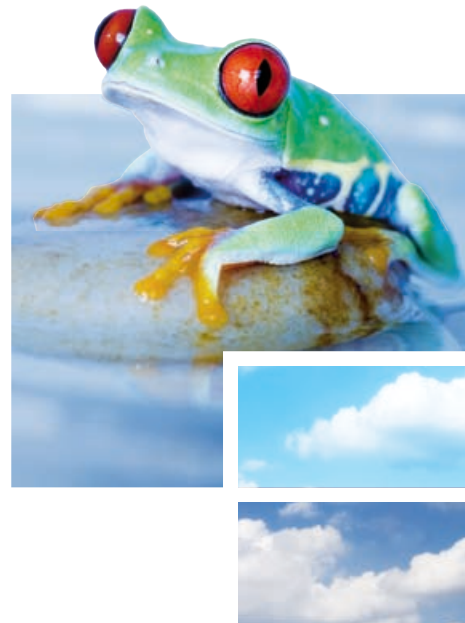
No matter which trade or industry, similar needs unite offices in different environments. Whether order processing, sales administration, accounting or logistics, busy offices everywhere need direct and instant access to a versatile multifunctional output device so they can process enquiries, orders, delivery notes and similar documents without delay.

Perfect for this purpose, the bizhub C25 offers the comprehensive capabilities of a fully featured A4 colour all-in-one. This is the ideal compact device for locations that require full versatility but don't have a lot of room to spare. Combining printing, copying and scanning in colour and mono as well as fax capabilities in a single system, the bizhub C25 impresses with its all-round functionality.

→ Workflow options



Compact partner for the office



→ Enhanced user comfort

With its small footprint, compact size and low weight, the bizhub C25 is the perfect A4 all-in-one that is always close at hand but doesn't ask for a lot of space. Its quiet operation makes it ideal for installation right next to the workplace. The attractive InfoLine design ensures user comfort and convenience for any kind of every-day A4 office job, whether that's printing, copying, scanning or faxing. Such comprehensive functionality makes the bizhub C25 an asset to every office where documents need to be processed instantly.

→ Sound eco-performance

The bizhub C25 combines efficient energy-saving features with the use of recycled materials in its manufacture and as an environmentally sound product employs ozone-free parts. The system also impresses with an extremely low energy consumption which is largely due to the use of Simitri® HD polymerised toner. This enables fixing at lower temperatures, which effectively shortens the warm-up period while enhancing energy efficiency. These comprehensive eco-technologies help minimise the bizhub C25's environmental impact and merit the renowned eco-labels Blue Angel and Energy Star.

In addition, Simitri® HD polymerised toner itself enhances the bizhub C25's eco-performance even further: The toner's polymerisation process is much kinder to the environment than the production of conventional toner. Using biomass as a carbon neutral ingredient, Konica Minolta's Simitri® HD toner answers the essential requirements of the modern, CO₂-conscious society.



→ Configurations



Key features	Key benefits
Small footprint	Ideal for use right next to the workplace
InfoLine design	High user comfort thanks to easy operation and clearly structured user panel
Simitri® HD	Combines superior image quality with sound eco-performance



Administrative workflows perfectly supported

➔ Instant printer

The bizhub C25 is ideal as a printer in the office where documents like orders and delivery notes are mostly printed in mono but occasionally contain colour, e.g. on company stationery. Konica Minolta's latest Emperon™ controller technology is applied to the bizhub C25 and ensures its seamless integration into most networks as well as compatibility with standard operating systems and most business applications. Its 800 MHz page-processor, 256 MB standard and 512 optional RAM as well as the optional 40 GB hard disc guarantee a smooth and productive performance. Standard PostScript and PCL as well as optional XPS support are also available via the Emperon™ system.

With Konica Minolta's award-winning My Tab feature, all functions that are frequently needed in an office, including standard duplex, n-up and overlay, can be combined under a single tab. This facilitates printing the kind of documents typically handled in this environment. The combination of duplex and the overlay function is of particular importance for the automatic printing of a company's terms and conditions on the reverse of every official order or delivery note.

➔ Productive copier

Equipped with standard document feeder and duplex unit, the bizhub C25 delivers up to 24 A4 copies per minute and offers highest convenience for quick and flexible copying right next to the workplace. Its standard 250-sheet paper feeder as well as the flexible 100-sheet multi manual feed tray can be extended with an optional lower paper feeder to provide a maximum paper capacity of 850 sheets. All standard paper sources and even the duplex unit process up to 210 gsm paper and thus ensure an attractive media versatility.

Where required, access to colour printing or copying can be restricted to authorised operators, while both functionalities remain freely available in black and white.



→ Versatile scanner

Scanning is essential for today's office communication and facilitates the sharing and distribution of information. The bizhub C25 scans up to 20 originals per minute in b/w and produces up to 10 colour scans per minute. The efficient scanning functionality includes Scan-to-Email, -FTP, -SMB and supports PDF, TIFF and JPEG as scan formats. Scanning is the perfect application not only to share and distribute relevant information among team members in the office, but also to digitize and archive. User flexibility is further enhanced with the clever scan to USB feature that enables timesaving direct scanning to the USB stick without any detour via the PC.

→ Efficient fax

Typical office requirements often include a specific need for faxing. The bizhub C25 provides a highly efficient Super G3 fax functionality that ensures for example the reliable receipt of incoming enquiries and orders. Extra user convenience is available by programming automatic forwarding of incoming faxes to a particular email account. This gives the recipient the choice of archiving the email, printing or deleting it after reading the message. PC fax on the other hand is an important eco-friendly feature, as sending faxes directly from the PC saves having to print documents before faxing them.

Key features

Key benefits

Multifunctionality	Increases user flexibility and saves space as it replaces four separate devices
Enhanced scanning with Scan-to-Email, -FTP, -SMB and -USB	Ensures convenient operation, streamlines workflows and improves overall productivity
Efficient faxing	PC fax e.g. helps to save paper because documents don't need to be printed before faxing
Central administration	Facilitates the administrator's task, saves time and effort



Administration and service made easy

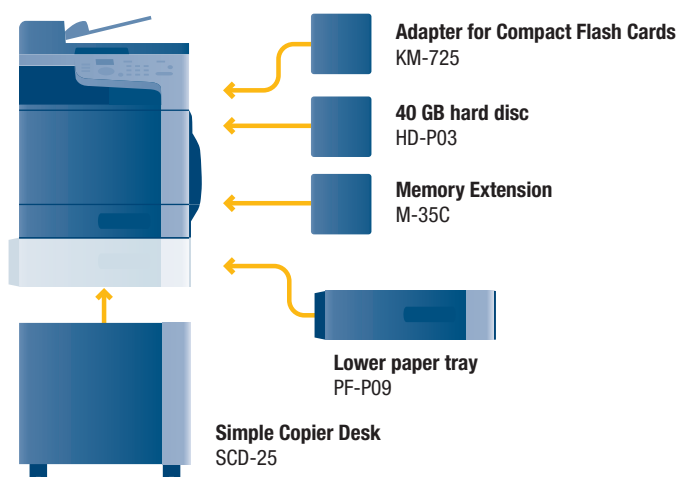
➔ PageScope Net Care Device Manager

The standard PageScope Net Care Device Manager facilitates the central implementation of system network configurations and central status monitoring. The application provides fast access to and simple monitoring of individual or all devices on the network, helping to maximise the uptime of all monitored equipment.

➔ CS Remote Care

Pro-active and highly flexible service support is available with CS Remote Care. Konica Minolta's remote monitoring application helps to keep the bizhub C25 running smoothly, minimising interruptions and maximising system availability. All relevant system data is transmitted directly to an automated process that never needs user intervention.

➔ Option diagram & descriptions



bizhub C25 Basic system

A4 communication center with 24 c/ppm b/w and colour. Standard Emperon™ controller with PCL 6 and PostScript 3 support (XPS optional). Paper capacity of 250 + 100 sheets standard and 500 sheets optional. Automatic document feeder and duplex unit standard. Up to 768 MB memory (256 MB standard) and optional 40 GB hard disc.

PF-P09	Lower paper tray A4, 500 sheets up to 90 gsm
SCD-25	Simple copy desk. Ensures correct height and provides room for paper storage
KM-725	Adapter for Compact Flash Cards. Required for direct printing, downloading fonts/profiles/overlays, collating
HD-P03	40 GB hard disc. Enables XPS and job retention in addition to all extra functions with CF card
M-35C	Memory Extension faster processing

➔ Technical specifications

Copier specifications

Copying process	Electrostatic laser copy Tandem, indirect
Toner system	Simitri® HD - polymerised toner
Copy/print speed A4 (mono/colour)	Up to 24/24 cpm
Autoduplex speed A4 (mono/colour)	Up to 24/24 cpm
1st Copy time (mono/colour)	11/16 sec.
Warm-up time	Approx. 38 sec. ³
Copy resolution	600 x 600 dpi
Gradation	256 gradations
Multi-copy	1–99
Original format	Max. A4
Magnification	25–400% in 0.1% steps
Copy functions	Duplex copy 2in1, 4in1 Density adjustment Card Shot Electronic collation ¹

Printer specifications

Print resolution	600 dpi
1st print time (mono/colour)	16/16 sec.
Controller CPU	800 MHz
Page description language	PostScript 3 (CPSI 3016) PCL 6 (XL 3.0) PCL 5e/c XPS ² PDF 1.7 Direct Printing ¹
Operating systems	Windows XP (32/64) Windows VISTA (32/64) Windows 7 (32/64) Windows Server 2003 (32/64) Windows Server 2008 (32/64) Windows DPWS support Macintosh OSX (10.2.8/10.3.9/10.4/10.5/10.6) Linux: SUSE; Red Hat Citrix Netware 4/5/6
Printer fonts	80x PCL Latin 137x PostScript 3 Emulation Latin
Print functions	Direct print ¹ of PDF (version 1.7); JPEG; TIFF; XPS ² Overlay Watermark N-up Poster Booklet page order Collating ¹

Scanner specifications

Scan speed	Colour/Mono up to 10/20 opm (300 dpi via DF)
Scan resolution	Max.: 600 x 600 dpi (TWAIN/WIA only)
Scan modes	Network TWAIN scan WIA Scan Scan-to-eMail Scan-to-FTP Scan-to-SMB Scan-to-USB
File formats	JPEG; TIFF; PDF
Scan destinations	Up to 220 (shared with fax)

Fax Specifications

Fax standard	Super G3
Fax transmission	Analogue; PC-Fax
Fax resolution	Max.: 203 x 392 dpi (super fine)
Fax compression	MH; MR; MMR; JBIG
Fax modem	Up to 33.6 Kbps
Fax destinations	Up to 220 (shared with scan)
Fax functions	Time shift; Fax Forwarding to eMail

System specifications

System memory	Standard: 256 MB Max.: 768 MB
System hard disc²	40 GB optional
CF Card Adapter¹	optional
Interface	10Base-T/100Base-TX/1000Base-T Ethernet USB 2.0
Network protocols	TCP/IP (IPv4 / IPv6); IPX/SPX; NetBEUI; AppleTalk (EtherTalk); SMB; LPD; IPP; SNMP; HTTP; HTTPS
Frame types	Ethernet 802.2; Ethernet 802.3; Ethernet II; Ethernet SNAP
Automatic document feeder	Up to 35 originals; A4; 50–110 gsm
Printable paper size	A6–A4; Customised paper sizes
Printable paper weight	60–210 gsm
Paper input capacity	Standard: 350 sheets Max.: 850 sheets
Tray 1	250 sheets; A6–A4; 60–210 gsm Custom (92–216 x 148–297 mm)
Tray 2 (optional)	500 sheets; 60–90 gsm; A4
Manual Bypass	100 sheets; A6–A4; 60–210 gsm Custom (92–216 x 148–356 mm)
Automatic duplexing	A4; 60–210gsm
Output capacity	Max.: 150 sheets face down
Power consumption	220-240 V / 50/60Hz; less than 1.1 KW
System dimensions (W x D x H, mm)	447 x 558 x 490
System weight	Approx. 32,5 kg

System features

Security	IP filtering and port blocking SSL2, SSL3 and TSL1.0 network communication IPsec support IEEE 802.1x support Secure Print ² Hard disc data encryption (print only) ²
Software	PageScope Net Care Device Manger PageScope Direct Print PageScope WebConnection

¹ Optional CF card enables direct printing (PDF, TIFF, JPEG), downloading fonts/profiles/overlays, collating, PDF direct print.

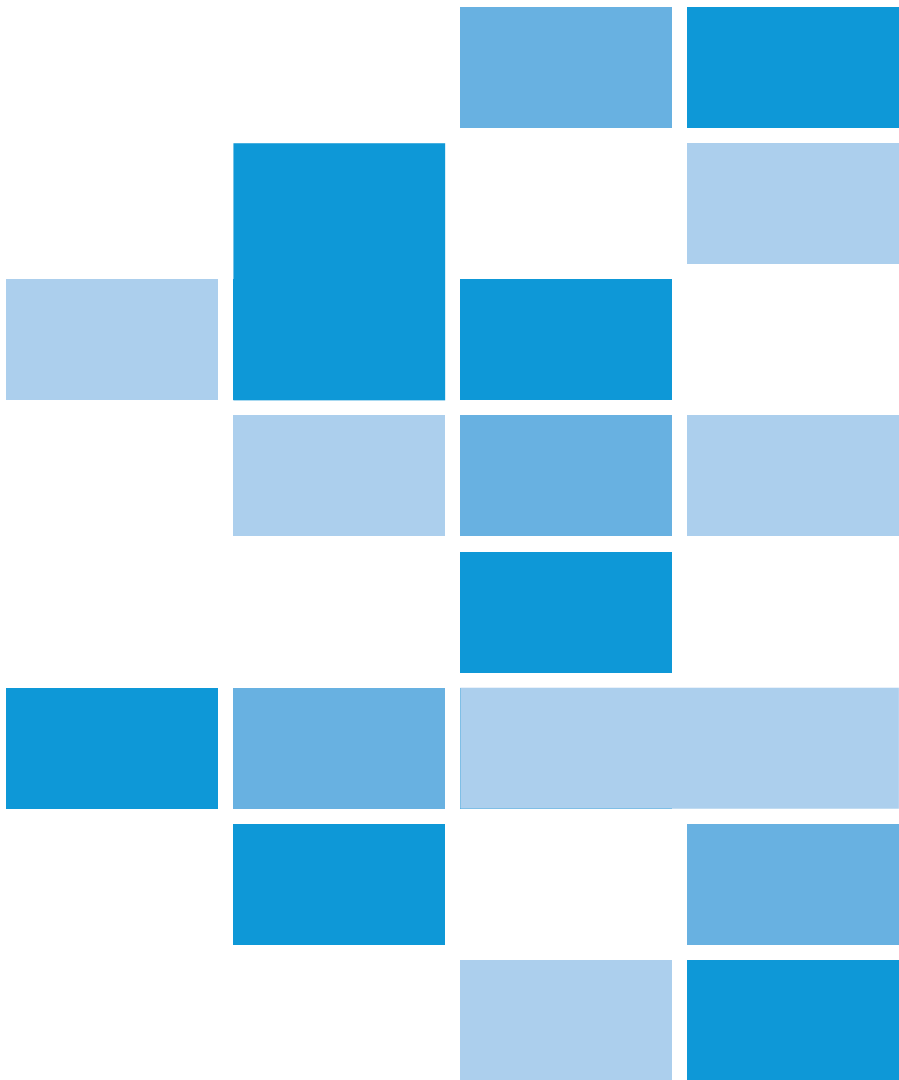
² Optional hard disc kit enables secure printing, proof-then-print, print & hold, job storing, XPS emulation and using downloaded profiles in addition to all extra functions with CF card.

³ Warm up time may vary depending on the operating environment and usage



KONICA MINOLTA

Simitri HD
High Definition Polymerised Toner



- All specifications relating to paper capacity refer to A4-size paper of 80 gsm quality.
- All specifications relating to scanning, copying or printing speeds refer to A4-size paper that is scanned, copied or printed crosswise in multipage, simplex mode.
- The support and availability of the listed specifications and functionalities varies depending on operating systems, applications, network protocols as well as network and system configurations.
- The stated life expectancy of each consumable is based on specific operating conditions such as page coverage for a particular page size. The actual consumables life will vary depending on the use and other printing variables including page coverage, page size, media type, continuous or intermittent printing, ambient temperature and humidity.
- Some of the product illustrations contain optional accessories.
- Specifications and accessories are based on the information available at the time of printing and are subject to change without notice.
- Konica Minolta does not warrant that any prices or specifications mentioned will be error-free.
- Microsoft, Windows and the Windows logo are trademarks, or registered trademarks, of Microsoft Corporation in the United States and/or other countries.
- All other brand and product names may be registered trademarks or trademarks of their respective holders and are hereby acknowledged.

Your Konica Minolta Business Solutions Partner:

--	--

Konica Minolta
Business Solutions (UK) Ltd
 Miles Gray Road, Basildon
 Essex SS14 3AR
 Tel: 01268 534444
 Email: info@konicaminolta.co.uk