



KONICA MINOLTA

The essentials of imaging



# **bizhub PRESS C6000 and bizhub PRESS C7000/P**

Perfect clarity and outstanding colour quality

**Production system** bizhub PRESS C6000 and bizhub PRESS C7000/P



# Colour production power through and through

Central reprographic departments and print providers will welcome Konica Minolta's colour digital PRESSes that combine high-speed colour print production with an extensive range of professional integrated finishing facilities. With their amazing imaging capabilities and absolutely consistent print quality, the bizhub PRESS C6000 and bizhub PRESS C7000/P open up a new era of superb quality colour production. Inimitable modularity provides unmatched versatility and ensures perfect adaptability to the production environment.

■ The bizhub PRESS series features ground-breaking 8-bit colour depth that prints smooth gradients without a visible moiré pattern. It guarantees close-to-offset results that are brighter and more consistent than previously achieved with digital technology. Its highly versatile media handling, professional finishing versatility and simplified workflow integration increase overall productivity and create ample opportunities for new business.

■ In the PRESS series, the bizhub PRESS C6000 and bizhub PRESS C7000/P invite professionals to "Expect Impact" – and they deliver! Konica Minolta's colour professionals incorporate the latest imaging technology promising finer colour, enhanced print quality and swifter production speed. In addition to their advanced finishing capabilities, the robust design and impressive media flexibility distinguish the bizhub PRESS C6000 and bizhub PRESS C7000/P from any other product in their class!

**bizhub PRESS C6000** 

**bizhub PRESS C7000** 

**bizhub PRESS C7000P** 



## → Dedicated to customer needs

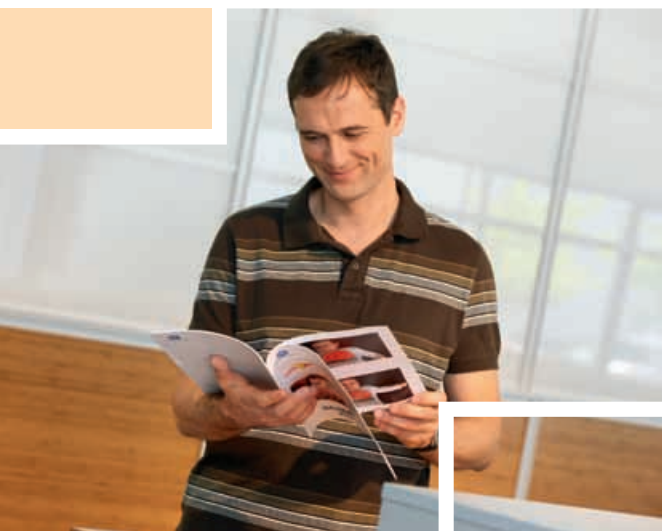
- The bizhub PRESS C6000/C7000/P are highly reliable, flexible and productive with a fast print speed of 60 or 71 colour pages.
- With two external print controllers, the IC-307 Creo controller and the EFI Fiery IC-306, as well as the embedded Konica Minolta controller IC-601, 3 flexible controller alternatives are supported that meet varied customer demands to perfection.
- Featuring proven, advanced Konica Minolta precision print technology in their hardware and versatile software, the bizhub PRESS C6000/C7000/P deliver outstanding quality. In addition, proprietary Konica Minolta developments like Simitri® HD and S.E.A.D. II satisfy even the most discerning customer's quality expectations.
- The bizhub PRESS C6000/C7000/P's impressive media flexibility meets virtually any request in terms of print jobs. Paper formats from A5 to A3+ (330 x 487 mm) and weights ranging from 64 to 300 gsm are processed via the regular paper feeders and the bypass tray.
- Advanced finishing facilities provide essential impact to boost customers' business opportunities. With an extensive range of folding options, as well as trimming and perfect binding, the finishing capabilities of the bizhub PRESS C6000/C7000/P are truly comprehensive and highly professional.
- Integrating seamlessly with the bizhub PRESS C6000/C7000/P, Printgroove POD further enhances production capabilities and increases the overall productivity of the production facility. The software suite optimises workflows and streamlines production processes, enabling configuration of individual workflows.



## → Environmentally committed

With their all-round capabilities, the bizhub PRESS C6000/C7000/P stand for colour production printing at its best – without neglecting those all important environmental aspects:

- Konica Minolta's proprietary polymerised toner, Simitri® HD, uses biomass as one of its components. This makes it CO<sub>2</sub>-neutral during recycling. At the same time the polymerisation process generates around 40% less CO<sub>2</sub> than conventional toner production. In addition, Simitri® HD enables fusing at lower temperatures, reducing energy consumption and further reducing related CO<sub>2</sub> emissions.
- In general, Konica Minolta promotes sustainable development and integrates environmental and social perspectives into its business strategies.
- As part of its zero-waste manufacturing concept, Konica Minolta strives to minimise the ecological impact of its products with efficient environmental activities throughout all stages of the product lifecycle. One aspect of this is reusable or recyclable packaging materials for hardware and consumables to minimise the waste generated by each device.





# Colour processing technologies



The bizhub PRESS C6000/C7000/P feature the latest in Konica Minolta's very own, advanced colour processing technology. Innovations like S.E.A.D. II, ITbit technology, CRS, Simitri® HD polymerised toner and Konica Minolta's "air-assist" paper feeding technology provide an unbeatable combination of outstanding quality and smooth processing, ensuring perfect results with the highest reliability.

## → S.E.A.D. II

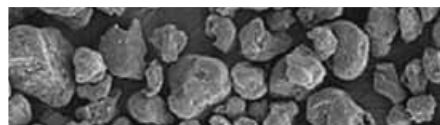
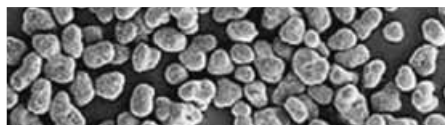
Developed by Konica Minolta, S.E.A.D. stands for "Screen-Enhancing Active Digital Process" and combines an array of technical innovations to guarantee truly exceptional colour reproduction at top speed. S.E.A.D. II represents the second generation of Konica Minolta's advanced colour processing technology and includes these important capabilities:

### ■ 1,200 x 1,200 dpi x 8 bit print resolution

The impressive print resolution on the bizhub PRESS C6000/C7000/P reproduces finest characters and thinnest lines to perfection. In combination with proprietary Simitri HD toner, this results in an almost offset-like print quality.

### ■ FM screen technology

Also thanks to the excellent resolution of 1,200dpi, the bizhub PRESS C6000/C7000/P provide additional screens for higher quality prints, enabling smoother and more realistic image reproductions that are a perfect match to print data. In addition, the Frequency Modulated (FM) screen technology ensures smooth moiré- and jagged-free images.



#### ■ ITbit technology

Konica Minolta applies its proprietary Image Tag bit (ITbit) technology on the C6000 and C7000 series. This unique process improves the quality of text, helping to sharpen frayed edges in halftone printing. The benefits are obvious, especially in outlines, reversed and slim text.



No ITbit  
Technology

With ITbit  
Technology

#### ■ Image stability

An innovative short-interval-stability control monitors image consistency on the bizhub PRESS C6000/C7000/P during continuous printing. Corrections are fully automatic and improve the stability of the image quality, while the whole process considerably enhances production efficiency.

#### ■ Automated colour management tools promise increased productivity

The bizhub PRESS C6000/C7000/P streamline workflows with calibration that is completely hands-free and allows operators to focus fully on producing more outstanding quality jobs in less time.

#### ■ Colour Retention and Stability (CRS)

The exclusive CRS technology constantly monitors the status of the bizhub PRESS C6000/C7000/P. Receiving continuous feedback about changes in the print environment and the engine, CRS immediately makes the necessary adjustments to always maintain highest print quality.

## Simitri HD

High Definition Polymerised Toner

### ➔ Simitri® HD polymerised toner

An essential requirement in production printing, the bizhub PRESS C6000/C7000/P deliver a superior colour image quality as well as impressive black density with their unique Simitri® HD polymerised toner. Simitri® HD also ensures an unparalleled colour image stability and with its reduced fusing temperature supports a truly impressive range of media.

### ➔ Ultra-smooth paper processing

The bizhub PRESS C6000/C7000/P feature fast and ultra-smooth paper processing. Where required, an optional heating unit inside the paper magazine dries paper stock before printing. Konica Minolta's "air-assist" paper feeding technology separates sheets and feeds them individually – a process that double-feed detection sensors make even more reliable! Thanks to an innovative printing and developing process, fusing temperatures are low, resulting in a considerable increase in media flexibility. Each individual print is cooled and de-curved before output giving optimum results. This performance can be further enhanced with a unique optional humidification decurler that elevates the moisture content in the paper and thus eliminates curling.

### ➔ High availability

Konica Minolta's remote diagnostics system CS Remote Care means pro-active support for each bizhub PRESS C6000/C7000/P in the field. With constant analysis of the system performance, CS Remote Care enables automated reporting and preventive maintenance, effectively assuring maximum system uptime.

In addition, operators themselves can avoid longer production interruptions with self-maintenance. Qualified training and support for this is available with ORU-M, Konica Minolta's Operator Replaceable Unit Management program.



# True production capabilities

Whatever the configuration, the bizhub PRESS C6000/C7000/P combine impressive colour speed and superb quality output with durability, reliability and a streamlined, integrated design. Each system represents an economically viable solution customised for printing environments that want to offer customers the full scope of competitively priced, diverse printing choices.

- By offering reasonable and sustainable running costs, the bizhub PRESS C6000/C7000/P significantly help professional printers to ensure competitiveness while achieving attractive margins. Konica Minolta's progressive digital production printing presses deliver the productivity gains and economic potential that are so essential for professional printing environments.
- The bizhub PRESS C6000/C7000/P come in 40 different system configurations. They all provide the same robust colour printing and comprehensive performance, with the ability to be tailored to meet the needs of individual professional user groups. All product versions are available as multi-functional devices with scanning and copying functionality – and alternatively as pure printers for environments that concentrate exclusively on print production.



- These digital printing presses ensure fast short run printing while maintaining short turnaround times efficiently. With their output capacity of up to 60 (PRESS C6000) and 71 (PRESS C7000/P) pages per minute in both full colour and black and white as well as the paper and toner refill on-the-fly functionality, the bizhub PRESS C6000/C7000/P are ideal for heavy-duty production and are capable of handling extensive output volumes.





- The bizhub PRESS C6000/C7000/P impress with sophisticated paper processing capabilities. Providing up to 7,500 pages input capacity and up to 13,600 pages output capacity, the digital presses process a wide range of substrates, including media weights of up to 300 gsm – whether that's coated paper, card or digital offset stock.
- One precondition for success in the production printing sector is highest precision: The bizhub PRESS C6000/C7000/P meet this challenge with a back-to-front and page-to-page registration that comes very close to offset printing results.
- Ease of use is another attractive asset of the bizhub PRESS C6000/C7000/P: Convenience, fast and easy handling and no-nonsense operation were among the top development priorities for Konica Minolta's colour production systems. Just one example is their large full-colour operator panel for clear and easy access to all functions.



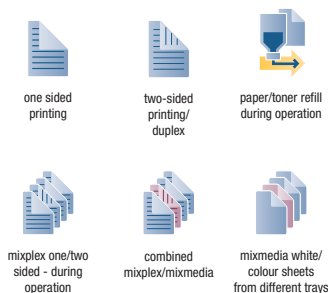
- To satisfy the diverse requirements of the most varied professional printing environments, the bizhub PRESS C6000/C7000/P can be equipped with three different controllers that all guarantee the fast and smooth processing of colour jobs:
  - The external EFI controller IC-306 is a viable all-round player that supports the impressive system functionality with latest Fiery technology and provides an intuitive, user-friendly interface between operator and digital press.
  - The external CREO controller IC-307 is the perfect solution for VDP applications (Creo VPS) and an ideal choice for hybrid prepress workflows. Proprietary Creo Colour Server technology supports the bizhub PRESS C6000/C7000/P as robust workflow solutions with outstanding print quality and exceptional productivity
  - The embedded Konica Minolta controller IC-601 offers affordable colour management as well as seamless integration with a wide range of Konica Minolta applications. The highlight of the IC-601 is its complete implementation into the bizhub PRESS C6000/C7000/P with full panel integration of the controller operation.

# Unparalleled finishing choices

Professional finishing of the printed product is an integral part of any production run – and flexibility is the key! The bizhub PRESS C6000/C7000/P can be equipped with the full range of highly versatile finishing options. Konica Minolta's colour production presses accommodate all customer requirements, including numerous online punching and stapling options, a generous selection of folding functions, and booklet creation.

## ■ bizhub PRESS C6000/C7000/P (main unit)

Professional finishing starts right inside the bizhub PRESS C6000/C7000/P – a variety of advanced features ensures the production of sophisticated document formats. Mixplex for example allows combining single- and double-sided pages within one document. Mixmedia lets the user specify individual paper types from various trays on page-level. The combined mixmedia and mixplex function fully automates the production of complex single and double-sided documents on different media.



## ■ Paper feed unit (PF-602)

The paper feed unit PF-602 increases the paper input capacity to 7,500 sheets. Its air-assist paper feeding and optional dehumidifier further enhance the media flexibility of the bizhub PRESS C6000/C7000/P.



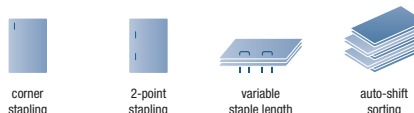
## ■ Relay unit (RU-509)

The relay unit RU-509 cools down the prints for immediate finishing and is equipped with a zigzag decurler for smooth and straight prints. By adding the optional humidification decurler the performance can be enhanced.



## ■ Stapling unit (FS-521)

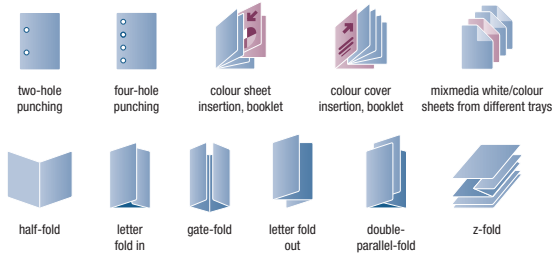
Equipped with the FS-521 the bizhub PRESS C6000/C7000/P provide multi-position stapling making this the perfect choice for the production of manuals, reports and other





**Folding and punching unit (FD-503)**

The ideal choice for the production of mailings, flyers and more, the FD-503 is used to its best advantage in combination with the booklet maker, staple finisher or perfect binder. The folding and punching unit provides six different folding schemes, two- or four-hole punching with 100% productivity, and the post-insertion of pre-printed sheets and covers.



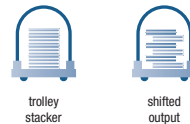
**Multi (GBC) punching unit (GP-501)\***

The smart punching unit offers high performance multi (GBC) punching of sheets at full system speed in preparation for offline spiral binding. Various available die sets correspond to the most popular punching schemes, such as metal-based coil (velo) and plastic (comb) binding.



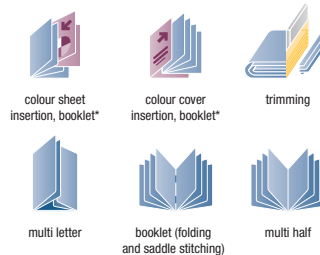
**Stacking unit (LS-505)**

Equipped with the large capacity stacker unit, the bizhub PRESS C6000/C7000/P are perfectly suited for integration into environments with existing finishing facilities, such as insertion or postage metering facilities. A big improvement to all near-line finishing work.



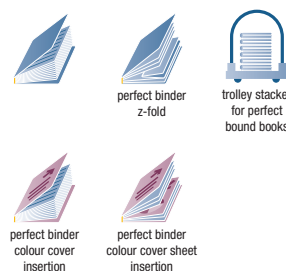
**Booklet making unit (SD-506)**

The booklet-maker provides tangible added value as ideal finishing equipment for all kinds of saddle stitched and trimmed booklets. It speeds up the online production of leaflets, brochures, catalogues and other marketing, sales and training materials.



**Perfect binding unit (PB-503)**

This is the finisher for inline production of all kinds of perfect-bound books. The functionality includes Z-fold insertion and insertion of pre-printed colour covers and sheets. Book binding is possible for books with up to 30 mm spine width and includes inline cover trimming. The integrated cover tray has a capacity for up to 1,000 sheets; and the perfect bound books are output into a trolley stacker.



\* requires RU-506

# Example of System configurations

The bizhub PRESS C6000/C7000/P excel with an amazing modularity that provides an impressive choice of system configurations. With 40 different product versions almost any imaginable combination is covered, offering complete customisation and answering the most specific customer demands.

## The system for brochures and direct mailings

- 60/71 full colour A4 pages per minute print performance
- Duplex as standard
- Highest image quality
- 7,500 sheets paper input capacity
- Up to 300 gsm (from PF-602 lower tray)
- Numerous punching, folding and stapling possibilities
- Saddle stitching and booklet making for up to 50 sheets/200 images
- Stapling of up to 100 sheets with variable staple length



FS521 - SD506 - F0503

## The system for labels and marketing collateral

- 60/71 full colour A4 pages per minute print performance
- Duplex as standard
- Highest image quality
- 7,500 sheets paper input capacity
- Up to 300 gsm (from PF-602 lower tray)
- Toner and paper refill "on the fly"
- Up to 5,000-sheet stacking capacity
- Trolley mounted paper stacker



LS505

## The system for corporate documents and direct mailings

- 60/71 full colour A4 pages per minute print performance
- Duplex as standard
- Highest image quality
- 7,500 sheets paper input capacity
- 3,200 sheets paper output capacity
- Up to 300 gsm (from PF-602 lower tray)
- Toner and paper refill "on the fly"
- Stapling of up to 100 sheets with variable staple length



FS521

## The system for perfect bound books and booklets

- 60/71 full colour A4 pages per minute print performance
- Duplex as standard
- Highest image quality
- 7,500 sheets paper input capacity
- Up to 300 gsm (from PF-602 lower tray)
- Saddle stitching and booklet making for up to 50 sheets/200 images
- Book binding for up to 30 mm spine width with hot melted glue process
- Post insertion of cover sheets from various sources and in-line cover trimming



PB503 - SD506



**The system for flyers, existing finishing environments and perfect bound books**

- 60/71 full colour A4 pages per minute print performance
- Duplex as standard
- Highest image quality
- 7,500 sheets paper input capacity
- Up to 300 gsm (from PF-602 lower tray)
- Numerous punching and folding possibilities
- Up to 5,000-sheet stacking capacity
- Trolley mounted paper stacker
- Book binding for up to 30 mm spine width with hot melted glue process
- Post insertion of cover sheets from various sources and in-line cover trimming



**PB503 - LS505 - FD503**

**The system for existing finishing environments, all kinds of booklets and reports**

- 60/71 full colour A4 pages per minute print performance
- Duplex as standard
- Highest image quality
- 7,500 sheets paper input capacity
- Up to 300 gsm (from PF-602 lower tray)
- Up to 5,000-sheet stacking capacity
- Trolley mounted paper stacker
- Saddle stitching and booklet making for up to 50 sheets/200 images
- Stapling of up to 100 sheets with variable staple length



**FS521 - SD506 -LS505**

**The system for corporate documents, existing finishing environments and reports**

- 60/71 full colour A4 pages per minute print performance
- Duplex as standard
- Highest image quality
- 7,500 sheets paper input capacity
- Up to 300 gsm (from PF-602 lower tray)
- GBC multi punching with various customer replaceable die sets
- Up to 5,000-sheet stacking capacity
- Trolley mounted paper stacker
- Stapling of up to 100 sheets with variable staple length



**FS521 - LS505 - GBC Punch GP501**

FS-521	Multi-position stapling (FS-521)
SD-506	Booklet making (SD-506)
FD-503	Folding & punching (FD-503)
GP-501	Smart (GBC) punching (GP-501)
LS-505	Large-capacity stacking (LS-505)
PB-503	Perfect binding with trolley stacking (PB-503)



KONICA MINOLTA

Simitri HD  
High Definition Polymerised Toner



Adobe PostScript® 3™



## Technical specifications

### Printer specifications

**Print speed A4**  
Up to 60 ppm (bizhub PRESS C6000)  
Up to 71 ppm (bizhub PRESS C7000/P)

**Print speed A3**  
Up to 34 ppm (bizhub PRESS C6000)  
Up to 38 ppm (bizhub PRESS C7000/P)

**Print resolution**  
1,200 x 1,200 dpi x 8 bit  
Max.: 1,200 x 3,600 dpi equivalent

**Gradations**  
256 gradations

### System specifications

**Paper weight**  
64 - 256 gsm,  
Up to 300 gsm

**Duplex unit**  
Non-stack type, 64300 gsm

**Paper sizes**  
A5 SRA3 320 x 450 mm  
Max paper size (330 x 487 mm  
321 x 480 mm)

**Maximum image area**  
321 x 480 mm

**Paper input capacity**  
Maximum: 7,500 sheets  
Main unit: up to 1,500 sheets  
PF-602: up to 6,000 sheets

**Paper output capacity**  
Maximum: 13,600 sheets  
Stacking unit with trolley: 5,000 sheets  
Large capacity tray: 3,000 sheets  
Per sub tray: 200 sheets

**Main unit dimensions (W x D x H mm)**  
760 x 992 x 1,076 mm

**Main unit weight**  
356 kg (only main unit)

### Controller specifications

#### IC-306 external EFI Fiery controller

**CPU**  
Intel Core2 Quad @ 2.66 GHz

**RAM**  
2 GB high-speed memory

**HDD**  
160 GB SATA hard drive

**Interface**  
Ethernet (10/100/1000-Base-T)

**File formats**  
Adobe PostScript Level 1, 2, 3  
Adobe PDF 1.4, 1.5, 1.6, 1.7;  
PDF/X-1a, 3; EPS(option); TIFF(option);  
TIFF/IT(option); JPEG(option);  
PPML; Creo VPS compatible  
Fiery FreeForm v1/Fiery FreeForm v2.1

**Client environments**  
Windows 7/2000/XP/Vista  
Windows Server 2003/2008  
Macintosh OSX (10.3.9 or later)  
Intel Macintosh OSX (10.4 or later)

#### IC-307 external Creo controller\*

**CPU**  
Intel Core i7 @ 2.8 GHz

**RAM**  
2 GB system memory  
3 GB image memory

**HDD**  
2x 500 GB system disc  
2x 500 GB image disc

**Interface**  
Ethernet (10/100/1,000-Base-T)

**File formats**  
Adobe PostScript 1, 2, 3;  
Adobe PDF 1.3, 1.4, 1.5, 1.6, 1.7;  
PDF/X-1a; EPS; TIFF (except for 16 bit tiff);  
TIFF/IT; JPEG (except for Progressive JPEG and  
JPEG 2000); CT/LW  
Creo Variable Print Specification (VPS)  
PPML

**Client environments**  
Windows 7/XP/Vista  
Windows Server 2003/2008  
Macintosh OSX up to 10.6 (64bit)

#### IC-601 internal Konica Minolta controller\*

**CPU**  
Intel Core2 Duo @ 2.8 GHz

**RAM**  
4 GB high-speed memory

**HDD**  
2x 250 GB SATA disc space

**Interface**  
Ethernet (10/100/1,000-Base-T)

**File formats**  
Adobe PostScript 3; PCL 5c/6;  
Native PDF; PDF 1.7; PDF/X-1a, X-3;  
EPS; TIFF; TIFF/AT; JPEG; PPML

**Client environments**  
Windows 7/2000/XP/Vista  
Windows Server 2003 / 2008  
Macintosh OSX (10.4.x to 10.6.x)

### Scanner specifications\*\*

**Scan speed A4**  
Up to 40 opm

**Scan speed A3**  
Up to 22 opm

**Scan resolution**  
600 x 600 dpi

**Scan modes**  
TWAIN scan; Scan-to-HDD; Scan-to-FTP;  
Scan-to-SMB; Scan-to-E-mail

**Scan formats**  
TIFF (single and multi page), PDF

### Copier specifications\*\*

**Copy speed A4**  
Up to 60 ppm (bizhub PRESS C6000)  
Up to 71 ppm (bizhub PRESS C7000)

**Copy speed A3**  
Up to 34 ppm (bizhub PRESS C6000)  
Up to 38 ppm (bizhub PRESS C7000)

**Copy resolution**  
Max. 600 x 600 dpi

### Gradations

256 gradations

### FCOT

Less than 6.5 sec. (colour A4)

### Magnification

25 - 400% in 0.1% steps

### Multiple copies

1 - 9,999

### Accessories

**Automatic document feeder DF-622**  
Max.: 100 sheets

#### Paper feed unit PF-602

2 magazines  
Paper capacity: up to 6,000 sheets  
Paper weight: 64 - 300 gsm (lower tray)  
Standard paper sizes: B4 SRA3  
Min. paper size: 100 x 148 mm (lower tray)  
Max. paper size: 330 x 487 mm

#### Folding and punching unit FD-503

Pre-printed sheet insertion (PI):  
2 PI trays for 500 sheets each  
Punching (2 and 4 hole)  
Folding (half-fold; z-fold; gate-fold; letter fold in;  
letter fold out; double-parallel-fold)  
Sub tray for up to 200 sheets

#### Multi (GBC) punching unit GP-501\*\*\*

Multi punching of A4 sheets  
User replaceable die sets for:  
velo bind; plastic comb; wire bind; colour coil;  
pro click  
Paper weight: 75 - 216 gsm

#### Booklet making unit SD-506

Booklet making of up to 50 sheets (200 images)  
Saddle stitching; trimming  
Output tray for up to 50 booklets  
Multi letter fold in (up to 5 sheets)  
Multi half fold (up to 5 sheets)

#### Stacking unit LS-505

Up to 5,000 sheets stacking capacity  
Trolley mounted stacker  
Auto-shift stacking  
Sub tray for up to 200 sheets  
Paper clamp mechanism

#### Perfect binding unit PB-503

Hot melt glue binding system  
Integrated 1-side trimming of cover sheets  
Books from A5 up to A4+ (307 x 221 mm)  
Books from 10 sheets up to 30 mm spine width  
Cover paper tray for up to 1,000 sheets  
Sub tray for up to 200 sheets  
Book stacking capacity of up to 3,300 sheets  
2 stacks

#### Stapling unit FS-521

Stapling of up to 100 sheets  
2-point and corner stapling  
Variable staple length (cutting mechanism)  
Output for up to 3,000 sheets  
Sub tray for up to 200 sheets  
Auto-shift sorting and grouping

#### Humidifier unit HM-102

Humidification decurler

\* Available soon

\*\* Not for bizhub PRESS C7000P

\*\*\* Requires RU-506

- All specifications relating to paper capacity refer to A4 size paper of 80 gsm quality.
- All specifications relating to scanning, copying or printing speeds refer to A4 size paper that is scanned, copied or printed crosswise in multi-page, simplex mode.
- The support and availability of the listed specifications and functionalities varies depending on operating systems, applications, network protocols as well as network and system configurations.
- Some of the product illustrations contain optional accessories.
- Specifications and accessories are based on the information available at the time of printing and are subject to change without notice.
- Konica Minolta does not warrant that all specifications mentioned will be error-free.
- Microsoft, Windows and the Windows logo are trademarks, or registered trademarks, of Microsoft Corporation in the United States and/or other countries.
- All other brand and product names may be registered trademarks or trademarks of their respective holders and are hereby acknowledged.

Your Konica Minolta Business Solutions Partner:



Konica Minolta  
Business Solutions (UK) Ltd  
Miles Gray Road, Basildon  
Essex SS14 3AR  
Tel: 01268 534444  
Email: info@konicaminolta.co.uk